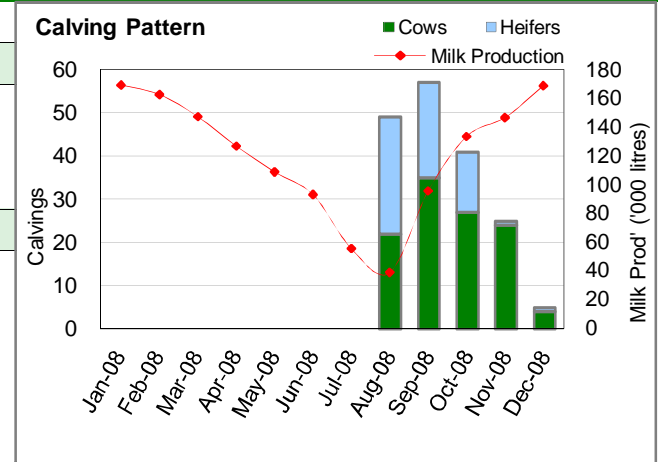
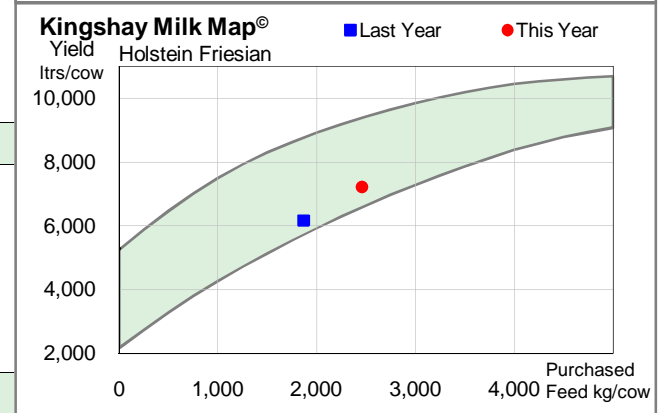


MONTHLY RESULTS **12 MONTH RESULTS**

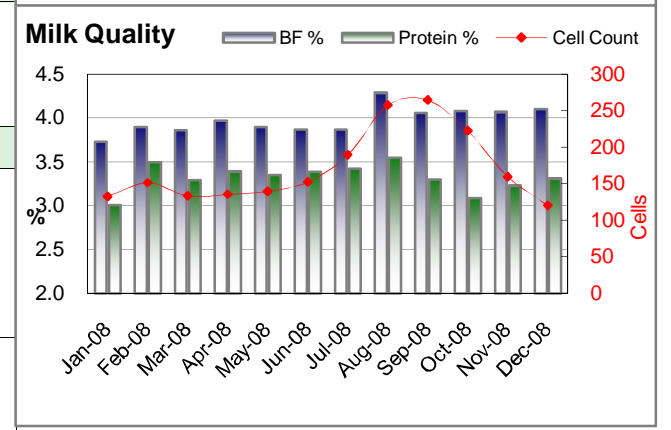
Dec-07		Dec-08		Month Change		Last Year	This Year	Year Change	
STOCK									
225	225			0%	Cows in herd	230	200	-13%	
223	223			0%	Cows in milk	194	183	-6%	
1	1	4	1	150%	Number of cow + heifer calvings	188	50	112 65	-26%
MILK PRODUCTION									
25.2	24.8	ltr/day		-2%	Yield per cow	6,165	7,222	litres	17%
6	7	ltr/day		10%	Yield from all forage per cow	2,483	2,615	litres	5%
0	0	ltr/day			Yield from grazed forage per cow	1,153	1,211	litres	5%
24%	27%				% of total yield from forage	40%	36%		-10%
3.91	4.10	%			Butterfat	4.01	3.96	%	
3.00	3.31	%			Protein	3.31	3.29	%	
21	199	20	120		Hygiene : Cell count	23	171	24	171
27.02	26.93	p		0%	Milk Price	21.62	26.51	p	23%



FEED									
5.0	5.2	kg/day		4%	Concentrate use per cow	1,077	1,353	kg	26%
0.20	0.21	kg		6%	Concentrate use per litre	0.17	0.19	kg	7%
157	206	£		31%	Concentrate price per tonne	134	176	£	31%
15	18	£		18%	Other purchased feed cost per cow	74	112	£	51%
5.02	6.59	p		31%	All purchased feed cost / litre	3.55	4.86	p	37%



MARGINS									
38,379	34,327	£		-11%	MOPF for herd	255,555	312,566	£	22%
171	153	£		-11%	MOPF per cow	1,110	1,563	£	41%
22.00	20.34	p		-8%	MOPF per litre	18.07	21.65	p	20%



FORAGE										
Kingshay can accept no responsibility for the information supplied to it. Every care will be taken by Kingshay to produce an accurate report but it does not accept any liability for any loss (whether direct or consequential) arising from any defect in the report.						Nitrogen use				
						Stocking rate	2.62	2.27	cows/ha	-13%
						Milk from forage per hectare	6,499	5,941	litres	-9%
						Fertiliser cost / ha			£	
Margin over feeds & fertiliser / cow										
Margin over feeds & fertiliser / ha										
Margin over feeds & fertiliser / ltr										

